

JOFFREY ★ BALLET  
CHICAGO

ASHLEY WHEATER MBE  
THE MARY B. GALVIN ARTISTIC DIRECTOR



THE  
**NUTCRACKER**

DECEMBER  
3-27  
2022

# JOFFREY ★ BALLE

CHICAGO

ASHLEY WHEATER MBE  
THE MARY B. GALVIN  
ARTISTIC DIRECTOR

GREG CAMERON  
PRESIDENT  
AND CEO

ANNE L. KAPLAN  
BOARD  
CHAIR

# THE NUTCRACKER

December 3–27, 2022

## TABLE OF CONTENTS

3	Ashley Wheeler MBE
4	Greg Cameron
5	Artistic and Dancer Listing
6	<i>The Nutcracker</i> Program
7	Synopsis
9	Ballet Notes
11	2022–2023 Season Sponsors
13	Artists of the Company
15	Bios
26	Boards
28	Supporters
36	Joffrey Staff

THE JOFFREY BALLE  
ASHLEY WHEATER MBE  
The Mary B. Galvin Artistic Director  
GREG CAMERON  
President and CEO

Cover image: Joffrey Company Artist Yumi Kanazawa. Photo by Todd Rosenberg.  
Above: Joffrey Company Artists in *The Nutcracker*. Photo by Cheryl Mann.

PERFORMS AT:  
LYRIC OPERA HOUSE  
20 N. Wacker Dr. | Chicago, IL



Welcome to *The Nutcracker*.

At approximately the same time that the Joffrey created this *Nutcracker*, we began an initiative called “Joffrey for All.” The mission behind both ventures is the same. Joffrey is proud to be in Chicago. We are part of this community.

Our *Nutcracker* recalls one of the formative moments in the history of the city... The World’s Columbian Exposition. We adapt a holiday story to dovetail with our city’s legacy. Marie could be any child. Following one performance, a single mother came to me to thank us for telling her story. We hope you see some of your story being told by the artists on stage today.

I believe in the power of dance. “Joffrey For All” channels this power towards the entire city. We know that if we share the joy, self-discipline and skill found in dance with a broad population, many will be touched in a positive way by the experience. In a city as large and diverse as Chicago, there are many paths toward discovering oneself. For some, that journey includes dance.

For many years, the Joffrey has provided *Nutcracker* performances to children from Chicago Public Schools. This year, we offer two performances, which will be attended by thousands of children, plus a digital performance reaching 25,000 students. For some of these young people, this will be their first experience in a live theater. For others, this will be their first time coming to the Loop, with its busy streets and skyscrapers. Do you remember the first time you were touched by art? Art is an “open door” which does not close again.

I believe communities are built by discovering and telling shared stories. There are too many stories about people being pulled apart. I am grateful for stories which knit communities together.

For me, this is the spirit of the season. I hope you enjoy the performance.

A handwritten signature in black ink that reads "Ashley".

Ashley Wheeler MBE  
The Mary B. Galvin Artistic Director  
The Joffrey Ballet



Few things are as synonymous with the holiday season as *The Nutcracker*.

It is partly the reason this ballet is so special. It is awe-inspiring, a story paired with near-perfect music that proves time and again to be universal for people of all generations.

This is the sixth season since the Joffrey debuted its re-imagined version of the traditional holiday tale in 2016. We did not know what to expect at the time. Many considered it radical to retire Robert Joffrey's beloved version, which Chicagoans had understandably come to know and love. But, thanks to Ashley's artistic vision, we did it knowing that good storytelling sometimes requires taking big leaps and a team of people who believe in that vision. Please join me in thanking all of the "Believers" who generously supported the creation of Christopher Wheeldon's *Nutcracker* in 2016 (see page 11) and a special thanks to one of those commissioning sponsors, Board Director Rick Holson and Guarantee Trust Life Insurance Company. Rick and his family company are still believing as Presenting Sponsors this year.

Without you — our dedicated and enthusiastic audience — we would not be the internationally-acclaimed company we are. Please suspend reality and join me in Chicago, circa 1892 — a story about family and unity, born from a narrative unlike any other *Nutcracker* production in the world. Best of all, it is about Chicago, for the people of Chicago.

When you watch tonight, I hope you feel the magic — not only for the spirit of the season but for the city that inspired it all — and treasure it as much as we do.

In JOY,

A handwritten signature in black ink, which appears to read "Greg". The signature is fluid and cursive.

Greg Cameron  
President and CEO  
The Joffrey Ballet

ASHLEY WHEATER MBE

**The Mary B. Galvin Artistic Director**

GREG CAMERON

**President and CEO**

ROBERT JOFFREY

**Founder**

GERALD ARPINO

**Founder**

**Artists of The Company**

Coco Alvarez-Mena

Yoshihisa Arai

Amanda Assucena

Edson Barbosa

Brian Bennett

Evan Boersma

Anais Bueno

Valeria Chaykina

Lucia Connolly

José Pablo Castro Cuevas

Maxwell Dawe

Anabelle de la Nuez

Jonathan Dole

Derek Drilon

Fernando Duarte

Olivia Duryea

Stefan Goncalvez

Dylan Gutierrez

Dara Holmes

Victoria Jaiani

Hansol Jeong

Gayeon Jung

Yumi Kanazawa

Blake Kessler

Yuchan Kim

Hyuma Kiyosawa

Nae Kojima

Brooke Linfood

Zachary Manske

Graham Maverick

Jeraldine Mendoza

Valentino Moneglia Zamora

Xavier Núñez

Davide Oldano

Sergei Osminkin

Wictor Hugo Pedroso

Princess Reid

Aaron Renteria

Basia Rhoden

Christine Rocas

Julia Rust

Natali Taht

Miu Tanaka

Alberto Velazquez

**Artistic and Production Staff**

NICOLAS BLANC

**Rehearsal Director**

ADAM BLYDE

**Rehearsal Director**

SUZANNE LOPEZ

**Rehearsal Director**

SCOTT SPECK

**Music Director**

MICHAEL MORICZ

**Assistant Conductor & Company Pianist**

JORGE IVARS

**Company Pianist**

CODY CHEN

**General Manager**

JEREMY GUBMAN

**Artistic Administrator and  
Assistant to the Artistic Director**

CATHERINE EBY

**Company Manager**

KATHERINE SELIG

**Principal Stage Manager**

SHANDEE VAUGHAN

**Production Manager**

AMANDA HEUERMANN

**Stage Manager**

CHRIS MARAVICH

**Lighting & Video Supervisor**

SCOTT WOLFSON

**Technical Supervisor**

Patrons are requested to turn off pagers, cellular phones, and signal watches during performances. The taking of photographs and the use of recording devices are not allowed in this auditorium. Program and artists subject to change.

# THE NUTCRACKER

LIVE ACCOMPANIMENT BY LYRIC OPERA ORCHESTRA

*The Nutcracker* by Christopher Wheeldon

**Choreography © by** CHRISTOPHER WHEELDON

**Music by** PETER ILYICH TCHAIKOVSKY

**Act I Party Scene Music Arranged by** LJOVA

**Story by** BRIAN SELZNICK

**Staged by** NICOLAS BLANC, ADAM BLYDE,  
and SUZANNE LOPEZ

**Set, Costume and Mask Design by** JULIAN CROUCH

**Lighting Design by** NATASHA KATZ

**Puppetry Design by** BASIL TWIST

**Projection Design by** 59 PRODUCTIONS

**Choreographer's Assistant** JACQUELIN BARRETT

**Children's Cast Rehearsal Directors** ADAM BLYDE, SUZANNE LOPEZ,  
CAITLIN MEIGHAN and MICHAEL SMITH

**Assistant Scenic Design by** FRANK MCCULLOUGH

**Assistant Lighting Design by** JON GOLDMAN

**Lighting Recreation by** CHRIS MARAVICH

**Puppetry and Effects Construction by** BASIL TWIST and TANDEM OTTER PRODUCTIONS

**World premiere:** The Joffrey Ballet, December 10, 2016, Auditorium Theatre, Chicago, IL

---

**SPECIAL THANKS TO JEREMY GUBMAN**

for his help with coordinating *The Nutcracker* Children's Cast.



# SYNOPSIS

## *The Nutcracker*

### ACT I

It is Christmas Eve in Chicago, 1892. Workers from around the world are constructing the World's Columbian Exposition, which will open in five months. Marie, the daughter of one of the workers, encounters a gang of boys on the construction site who show off things they've stolen.

Marie's younger brother Franz steals a small red bundle from a rich boy's sled, and a Rat Catcher terrifies Franz.

Marie and Franz return to their home, a little shack where their widowed mother, a sculptress, is creating a great golden statue, which will preside over the fair.

Workers from the fair and their families soon arrive at the shack with decorations, a small tree, and much food and drink. A wonderful Christmas party begins.

The man who has designed and created the World's Fair, a mysterious figure known as The Great Impresario, surprises everyone and shows up, along with his apprentice (the rich boy from whom Franz stole the red bundle earlier). The Great Impresario entertains the workers with an enchanting vision of his fair.

He distributes gifts for everyone, but one is missing. Franz realizes it's the red bundle he'd stolen. The Great Impresario produces it like a magic trick and gives it to Marie. She unwraps it and discovers a beautiful nutcracker inside. Just then, the Rat Catcher frightens Franz, who drops the nutcracker, breaking it. It is swiftly fixed by The Great Impresario, but the party is now winding to a close and soon everyone leaves.

That night something very strange happens. Marie awakens and is shocked to see rats kidnap Franz! The Great Impresario returns, and with a wave of his hand, the little tree from the party grows until it seems to have taken over the entire world. The Nutcracker, now life-size and alive, appears from within its branches. The Rat King leads a battle against the Nutcracker. Marie distracts the Rat King and the Nutcracker kills him.

Franz is rescued, and the rats carry off their king, vowing revenge. The Nutcracker is transformed into Prince Peter. It begins to snow. A magical gondola comes to take The Great Impresario, the Prince, and Marie off into the night.

### ACT II

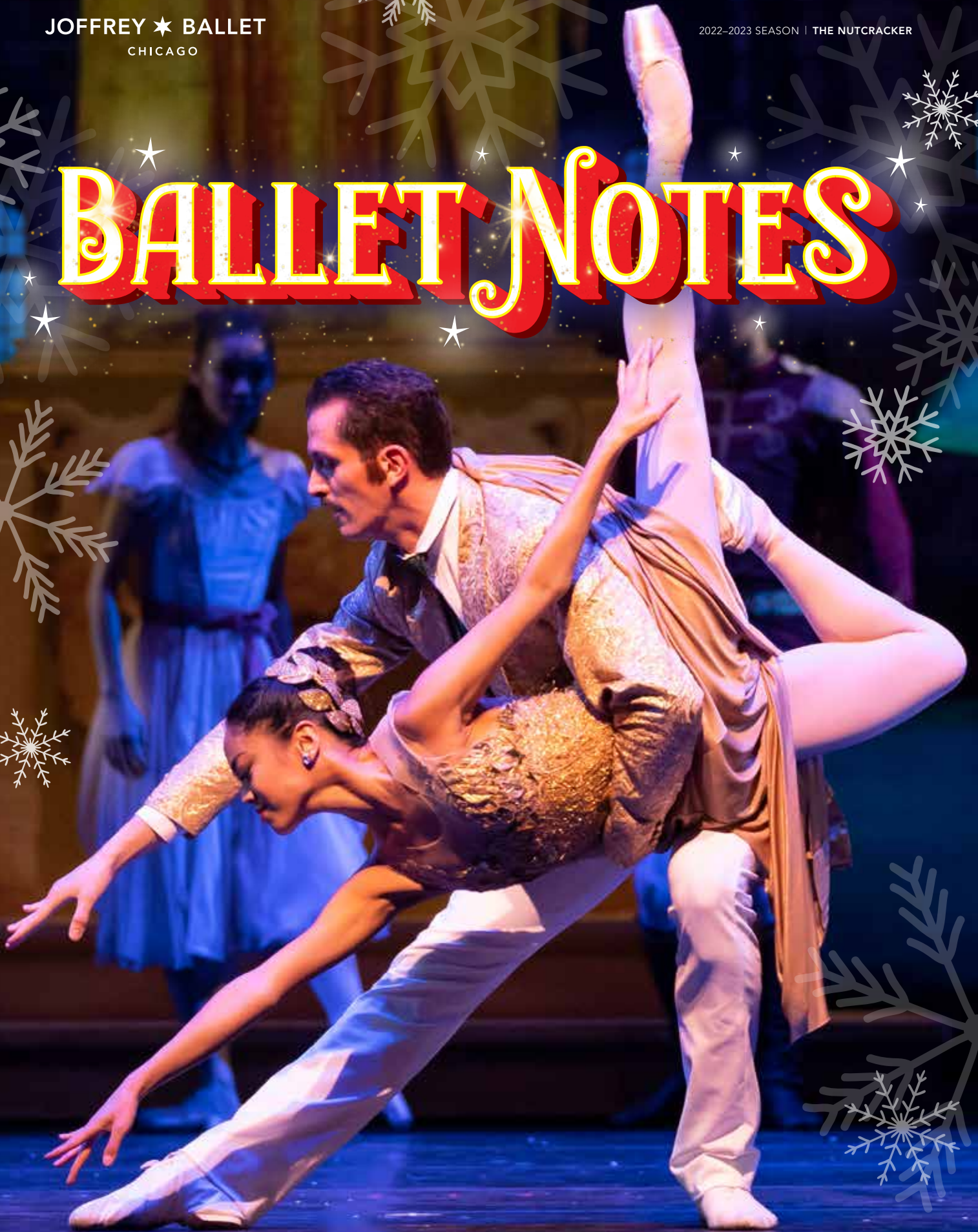
The gondola delivers The Great Impresario, the Prince, and Marie to the edge of a lake, where they are greeted by the Queen of the Fair, a vision in gold. The Queen grants them a visit to the Dream Fair. They move from pavilion to pavilion, where countries from around the world are represented. Soon The Great Impresario and the Queen of the Fair have fallen in love, which causes the Dream Fair to explode with light.

Marie wakes up from her dazzling dream. It is Christmas Day.

JOFFREY ★ BALLET  
CHICAGO

2022-2023 SEASON | THE NUTCRACKER

# BALLET NOTES



## THE NUTCRACKER

Christopher Wheeldon's *Nutcracker* was conceived specifically for the great city of Chicago. When asked by The Mary B. Galvin Artistic Director Ashley Wheater to create a new version of the ballet, they agreed it needed to be set in Chicago, home to the Joffrey since 1995. Re-imagining a story as classic as *The Nutcracker* is always a challenge, but one Wheeldon was eager to take on. Tchaikovsky's beloved score conjures unforgettable images in our minds, and it is almost impossible to imagine a *Nutcracker* without a magical growing Christmas tree or a battle between toys and mice, but Wheeldon knew immediately there was room for his imagination to take over.

The decision was quickly made to place the ballet within the World's Columbian Exposition of 1893, which has taken on new life in popular culture as the subject of Eric Larson's brilliant book *The Devil in the White City*. This mysterious, dark and magical moment in Chicago's history seemed the perfect time and place to re-invent *The Nutcracker*, even though the fair only ran from May 1st to October 30th, 1893, which means it had closed by Christmastime. We realized it would be thrilling to set the ballet five months *before* the fair opened, in the winter of 1892, when the fairgrounds were still under construction.

A historic image of a shack on the construction site became central to our new story, and you will see a version of it on stage in the ballet. This photograph also perfectly supported Wheeldon's wish to bring in a new socio-economic plotline for *The Nutcracker*. Instead of the central family being wealthy and privileged, our heroine, Marie, is from a working class, immigrant family. She lives with her younger brother and her widowed mother, a sculptress working on the golden Statue of the Republic. Instead of receiving luxurious and rare presents at a magnificent party in a vast house and then dreaming of even more presents and candy, our story offers a small gathering of immigrant workers coming together to celebrate the holiday with the things they have, filling the air with music and their vivid imaginations. Then, once Marie falls asleep in her shack, she dreams of what the fair will look like when it opens. The fair itself was a kind of dream city, a vision of what could happen when the whole world comes together to show the best side of humanity in all its glorious ingenuity. So Marie's dream coming five months before the fair opens becomes a kind of dream within a dream, which has real consequences for Marie once she wakes up.

For anyone who has visited Epcot Center in Florida, the idea of a World's Fair will be familiar. Countries from around the world set up vast pavilions to celebrate their native foods, arts and sciences. This provides the perfect setting for Marie's journey in Act II as she travels throughout the Dream Fair, which depicts actual pavilions from the fair including Buffalo Bill's Wild West show.

The chief architect of the World's Columbian Exposition in 1893 was a man named Daniel Burnham, and he provided inspiration for the character of The Great Impresario. He is mysterious and magical (like Drosselmeyer in the original), and he not only serves as the imaginative force behind our version of the fair, but also comes to play a real role in Marie's life.

It is this transformation of Marie's life that ultimately became what was most important to this new version of *The Nutcracker*. While being respectful of the source material, we hope that Marie's dream journey through the World's Fair will illuminate what is special about all holiday stories... the value of love, the need for hope and the comfort of family, no matter where you are from, or what type of family you have.

This seems like a dream worth remembering.

— Brian Selznick, Author

## 2022–2023 SEASON SPONSORS



THE  
FLORIAN  
FUND

ANNE L.  
KAPLAN

Nancy &  
Sanfred  
Koltun

## LIVE MUSIC SPONSORS

Sandy and Roger Deromedi

Sage Foundation

The Marina and Arnold Tatar Fund for Live Music

## 2022–2023 PRODUCTION SPONSORS

### RITA FINDS HOME COMMISSIONING SPONSORS

#### Presenting Sponsors

Denise Littlefield Sobel



#### Major Sponsor

Lorna Ferguson and Terry Clark

#### Sponsors

Greg Cameron and Greg Thompson

Dr. Rebecca L. Sherrick

Chicago Park District

National Endowment for the Arts

Lloyd A. Fry Foundation with Amina Dickerson

### BEYOND BORDERS SPONSORS

#### colōrem

Kiphart Family Foundation

Courtney Shea

Joan M. Hall

Bruce Sagan and Bette Cerf Hill

### CSO AND JOFFREY PROGRAM SPONSORS

#### Platée

Bill and Orli Staley Foundation

#### Heimat

Pam and Russ Strobel

### THE NUTCRACKER SPONSORS

#### Presenting Sponsor



#### Production Sponsors



#### With gratitude to *The Nutcracker* Commissioning Sponsors:

Margot and Josef Lakonishok

Searle Funds at The Chicago Community Trust

Hancher Auditorium, University of Iowa

And the many "Believers"

### ANNA KARENINA SPONSORS

#### Commissioning and Presenting Sponsor

Mr. and Mrs. Joel V. Williamson

#### Commissioning and Major Sponsor

Mary Jo and Doug Basler

And all of the generous donors who supported the World Premiere in 2019

### THE LITTLE MERMAID SPONSORS

#### Production Sponsors

Pamela Crutchfield

Jeanette Stevens

Ron and Ann Waters

# JOFFREY ★ BALLET

CHICAGO

ASHLEY WHEATER MBE  
THE MARY B. GALVIN ARTISTIC DIRECTOR

SUBSCRIBE NOW | 2022-2023 SEASON  
THE SEASON IS JUST GETTING STARTED...TWO MORE SHOWS



## ANNA KARENINA

FEBRUARY 15-26, 2023

Choreographed by Yuri Possokhov

Music by Ilya Demutsky



## THE LITTLE MERMAID

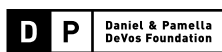
APRIL 19-30, 2023

Choreographed by John Neumeier

Music by Lera Auerbach

2 SHOW SUBSCRIPTION | SUBSCRIBE NOW | JOFFREY.ORG

2022-2023 SEASON SPONSORS



PERFORMS AT:

LYRIC OPERA HOUSE  
20 N. Wacker Dr. | Chicago, IL

\*Offer excludes price levels D and E and previously purchased tickets.

Joffrey Company Artist Christine Rocas in *Anna Karenina*, Photo by Cheryl Mann. | *The Little Mermaid*, ©Kiran West.

# 2022–2023 SEASON



Coco Alvarez-Mena  
Miami, FL



Yoshihisa Arai  
Hiroshima, Japan



Amanda Assucena\*  
Rio de Janeiro, Brazil



Edson Barbosa  
Rio de Janeiro, Brazil



Brian Bennett\*  
Lanham, MD



Evan Boersma\*  
Chicago, IL



Anais Bueno  
Córdoba, Mexico



Valeria Chaykina  
St. Petersburg, Russia



Lucia Connolly  
Los Angeles, CA



José Pablo Castro Cuevas\*  
Queretaro, Mexico



Maxwell Dawe\*  
Dorset, United Kingdom



Anabelle de la Nuez  
Cincinnati, OH



Jonathan Dole\*  
Sacramento, CA



Derek Drilon\*  
Vancouver, WA



Fernando Duarte\*  
Rio de Janeiro, Brazil



Olivia Duryea\*  
Haslett, MI



Stefan Goncalvez  
São Paulo, Brazil



Dylan Gutierrez  
Los Angeles, CA



Dara Holmes\*  
Wilmington, NC



Victoria Jaiani  
Tbilisi, Rep. of Georgia



Hansol Jeong  
Namyangju, South Korea



Gayeon Jung  
Seoul, South Korea



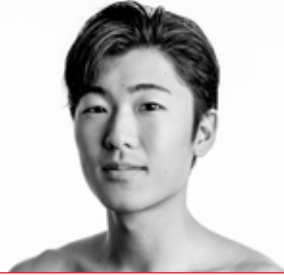
Yumi Kanazawa  
Los Angeles, CA



Blake Kessler  
Jacksonville, FL



Yuchan Kim\*  
Seoul, South Korea



Hyuma Kiyosawa  
Nagano, Japan



Nae Kojima\*  
Gold Coast, Australia



Brooke Linford\*  
Alpine, UT



Zachary Manske  
St. Paul, MN



Graham Maverick  
San Francisco, CA



Jeraldine Mendoza  
San Francisco, CA



Valentino Moneglia Zamora\*  
Murcia, Spain



Xavier Núñez  
Caguas, Puerto Rico



Davide Oldano\*  
Turin, Italy



Sergei Osminkin  
St. Petersburg, Russia



Victor Hugo Pedrosa  
Uberlandia, Brazil



Princess Reid  
Jacksonville, FL



Aaron Renteria  
Corona, CA



Basia Rhoden  
Fresno, CA



Christine Rocas  
Manila, Philippines



Julia Rust  
Noblesville, IN



Natali Taht  
Tallinn, Estonia



Miu Tanaka\*  
Chiba, Japan



Alberto Velazquez  
Havana, Cuba

# 2022-2023 ARTISTS OF THE COMPANY

TO LEARN MORE ABOUT THE DANCERS, VISIT: [JOFFREY.ORG/ARTISTS](http://JOFFREY.ORG/ARTISTS)

■ NEW JOFFREY ARTISTS | \*JOFFREY ACADEMY OF DANCE ALUMNI

# BIOS



## ASHLEY WHEATER MBE The Mary B. Galvin Artistic Director

Ashley Wheater has dedicated his life to dance. He was born in Scotland and trained at The Royal Ballet School in England. He worked with Frederick Ashton, Kenneth MacMillan, and Michael Somes in numerous ballets at Covent Garden, including *Swan Lake*, *Sleeping Beauty*, *Giselle*, *Manon*, *Anastacia*, and *The Dream*. Wheater danced with Rudolf Nureyev in *Nureyev and Friends* at the London Coliseum.

On Nureyev's advice, Wheater joined the London Festival Ballet and danced in his *Romeo and Juliet* and *Sleeping Beauty*. He danced in Glen Tetley's *Sphinx and Greening* and in Festival Ballet's large repertoire of classics and new creations. Under the artistic direction of John Field, he was promoted to Principal Dancer at the age of 20.

In 1982, he joined the Australian Ballet where he continued dancing principal roles in both classical and contemporary work, especially in the John Cranko full-length ballets.

In 1985, at the invitation of Gerald Arpino, Wheater joined The Joffrey Ballet. For the next four years, he performed various works by American choreographers including William Forsythe, Gerald Arpino, Mark Morris, Paul Taylor, and Laura Dean, as well as repertoire by Ashton and Cranko.

Joining the San Francisco Ballet in 1989, he continued his creative career working under Helgi Tomasson, and with choreographers James Kudelka, David Bintley, and many more. In 1997, he retired from dancing and was appointed Ballet Master and, later, Assistant to the Artistic Director at the San Francisco Ballet.

Since his appointment in 2007 as artistic director of The Joffrey Ballet, his passion and commitment to the Joffrey have been evident in the quality that he has brought to the dancing and to the repertoire. He has invited world-renowned choreographers, as well as fresh young talent, to create new work for the company. Wheater has added new full-length works to the Joffrey's repertoire, including Lar Lubovitch's groundbreaking *Othello*, Ronald Hynd's *The Merry Widow*, and Yuri Possokhov's *Don Quixote*.

In 2008, Wheater was the recipient of the Boeing Game-Changer Award in recognition of his commitment to community engagement in Chicago and to the celebration of diversity through dance. He sits on the Advisory Board for *Dance Magazine*, serves as the Artistic Advisor for ChiArts, and is the Advisor to the Arts for the Lincoln Academy of Illinois. In 2010, Wheater, representing The Joffrey Ballet, was named Lincoln Academy Laureate, the highest honor presented by the State of Illinois, and in 2013 the *Chicago Tribune* named him "Chicagoan of the Year." In 2015, Wheater received the University of Chicago Rosenberger Medal for Outstanding Achievement in the Creative and Performing Arts. In December 2019, he was appointed to be a Member of the Most Excellent Order of the British Empire (MBE) by Her Majesty Queen Elizabeth II.

# BIOS



## GREG CAMERON President and Chief Executive Officer

Driven by his lifelong love for the arts, for his hometown, and for connecting with people from every background, Greg Cameron leads the Joffrey Ballet as President & CEO, responsible for organization-wide administration and strategy. Under Greg's partnership with Mary B. Galvin Artistic Director Ashley Wheater MBE, the Joffrey has set new records at the box office and built the strongest financial foundation in its history.

His 2013 appointment was the culmination of three decades of work in arts administration and philanthropy. "I always loved art, but I wasn't a great artist," he says. "I could paint by numbers, or I could connect the dots. I realized early on I was a good dot connector. I could connect people to each other and help them get involved with the things they believe in."

As a child in suburban Chicago, Greg ran a makeshift theater out of his garage and sold more mints than anyone else for his local YMCA. And as an adult, he turned those passions into a career raising funds for the cultural organizations he loves. At the Chicago Department of Cultural Affairs; the Art Institute of Chicago; the Museum of Contemporary Art, where he rose to the role of Deputy Director and Chief Development Officer; and WTTW/WFMT, where he served as COO, Greg dedicated himself to supporting art and artists and to creating meaningful experiences for others.

"The Joffrey brings it all together for me," he says. "It's about collaboration, partnership with the community, honoring and supporting artists, and telling stories that truly move people."

Today, Greg leads the Joffrey's efforts to support unforgettable productions and new commissions, reach out to organizations and communities across Chicago, and open up world-class ballet for audiences from all backgrounds. Greg serves on the Dance/USA Managers' Council for Large Budget Organizations, while also staying an active member of the Chicago cultural community, volunteering for a wide range of nonprofit organizations and civic committees. These include the Facing History and Ourselves Chicago Advisory Board, Enrich Chicago, and current Chair of the State Street SSA Commission.

# BIOS



## SCOTT SPECK Music Director & Conductor

With recent performances in London, Paris, Moscow, Beijing, New York, Chicago, San Francisco, Los Angeles and Washington, Scott Speck has inspired international acclaim as a conductor of passion, intelligence and winning personality.

Scott Speck is one of the most active conductors on Chicago's cultural scene. In addition to his many Joffrey performances, he is Artistic Director of the Chicago Philharmonic, and he has become a frequent guest for the Chicago Symphony's family concerts. He is currently the Illinois Council of Orchestras' Conductor of the Year.

Speck's concerts with the Moscow RTV Symphony Orchestra in Tchaikovsky Hall garnered unanimous praise. His gala performances with Yo-Yo Ma, Itzhak Perlman, Joshua Bell, Renée Fleming, Midori, Evelyn Glennie, and Olga Kern have highlighted his recent seasons as Music Director of the Mobile Symphony. He has collaborated with Carnegie Hall as Music Director of the West Michigan Symphony. He was invited to the White House as former Music Director of The Washington Ballet.

In recent seasons, Speck has conducted at London's Royal Opera House at Covent Garden, the Paris Opera, New York's Lincoln Center, Washington's Kennedy Center, Chicago's Lyric Opera House, San Francisco's War Memorial Opera House, and the Los Angeles Music Center. He has led numerous performances with the symphony orchestras of Baltimore, Houston, Chicago, Paris, Moscow, Shanghai, Beijing, Vancouver, Romania, and Slovakia, among many others.

Previously he held positions as Conductor of the San Francisco Ballet; Music Advisor and Conductor of the Honolulu Symphony; and Associate Conductor of the Los Angeles Opera. During a tour of Asia, he was named Principal Guest Conductor of the China Film Philharmonic in Beijing.

Speck is the co-author of two of the world's best-selling books on classical music for a popular audience, *Classical Music for Dummies* and *Opera for Dummies*. These books have received stellar reviews in the international press and have garnered enthusiastic endorsements from major American orchestras. They have been translated into twenty languages and are available around the world. His third book in the series, *Ballet for Dummies*, was released to great acclaim as well.

Speck has been a regular commentator on National Public Radio, the BBC, the Australian Broadcasting Corporation, and Voice of Russia, broadcast throughout the world. His writing has been featured in numerous magazines and journals.

Born in Boston, Speck graduated *summa cum laude* from Yale University. There he founded and directed the Berkeley Chamber Orchestra, which continues to perform to this day. He was a Fulbright Scholar in Berlin, received his Master's Degree with highest honors from the University of Southern California, served as a Conducting Fellow at the Aspen School of Music, and studied at the Tanglewood Music Center.

Scott Speck can be reached at [scottspeck.org](http://scottspeck.org), and on Facebook, Twitter and Instagram @ScottSpeckMusic.

# BIOS



## MICHAEL MORICZ Assistant Conductor

Michael's long career as a pianist, composer, and conductor for ballet has included significant associations with American Ballet Theatre, Houston Ballet, the Mark Morris Dance Group, Carolina Ballet, Pittsburgh Ballet Theatre, and the Juilliard Dance Division. He particularly treasures his conducting relationship with Texas Ballet Theater and the Fort Worth Symphony Orchestra during the past decade. His commissioned orchestral ballet scores include *The Mighty Casey*, *The Ugly Duckling*, and *The Great Gatsby*. He's composed incidental music and songs for theatre, original scores for the Showtime, Discovery, Fox, PBS, and Disney networks and created special arrangements for such renowned artists as Tommy Tune, Chita Rivera, Marvin Hamlisch, and Renee Fleming. Michael is best known as the arranger and music director of Broadway's annual *Jimmy Awards* and as one of the music directors for the acclaimed *Mister Rogers Neighborhood* on PBS. He joined the Joffrey in 2017.



## PYOTR (PETER) ILYICH TCHAIKOVSKY Composer

Pyotr (Peter) Ilyich Tchaikovsky (1840–1893) composed some of the most beloved themes in all of classical music. Tchaikovsky started piano lessons at age four and showed remarkable talent, eventually surpassing his own teacher's abilities. At age ten, he was sent to St. Petersburg to study at the School of Jurisprudence. In 1859, he took a position as a civil servant in the Ministry of Justice, but longed for a career in music, attending concerts and operas at every opportunity. He finally began study in harmony at age 21, and enrolled at the St. Petersburg Conservatory the following year, eventually studying with the illustrious composer and pianist Anton Rubinstein. In Moscow, Tchaikovsky became associated with the Bolshoi Theatre, and there he composed his first ballet, *Swan Lake*, in 1875. Within a few years Tchaikovsky was an established composer, beloved throughout Russia.

# BIOS



Photo by Angela Sterling.

## CHRISTOPHER WHEELDON OBE Director & Choreographer

Wheeldon trained at The Royal Ballet School and joined The Royal Ballet in 1991. In 1993, he joined New York City Ballet and was promoted to Soloist in 1998. He was named NYCB's first Resident Choreographer in July 2001. Since then, Mr. Wheeldon has created and staged productions for many of the world's major ballet companies, San Francisco Ballet, The Bolshoi Ballet, The Mariinsky Ballet, The Paris Opera Ballet and Hamburg Ballet among others.

In 2007, Mr. Wheeldon founded Morphoses/The Wheeldon Company and was appointed an Associate Artist for Sadler's Wells Theatre in London. Mr. Wheeldon now serves as Artistic Associate of The Royal Ballet. Mr. Wheeldon has created many works for the company, including the full-length *Alice's Adventures in Wonderland* and *The Winter's Tale*, both of which were co-productions with The National Ballet of Canada. *Like Water for Chocolate* is his latest full-length ballet for The Royal Ballet which had its premiere in June 2022.

In 2012, his ballet *Cinderella* premiered at Het Nationale Ballet and is making its way to audiences worldwide. For the Metropolitan Opera, he choreographed *Dance of the Hours* for Ponchielli's *La Gioconda* (2006) and Richard Eyre's production of *Carmen* (2012) as well as ballet sequences for the feature film *Center Stage* (2000) and the musical *Sweet Smell of Success* on Broadway (2002).

Mr. Wheeldon created a special excerpt for the Closing Ceremony of the London 2012 Olympics, and in April 2016, he was the Artistic Director for the Fashion Forward exhibition in Paris at La Musee Arts et Decoratif.

In 2014, Mr. Wheeldon directed and choreographed the Broadway musical version of *An American in Paris*, which had productions in Paris, New York, and London and has tour extensively through America, China, Japan and Australia. The Joffrey Ballet presented the world premiere in 2016 of *The Nutcracker* reimagined by Mr. Wheeldon and in 2017 he directed and choreographed Lerner & Loewe's *Brigadoon* starring Kelli O'Hara and Patrick Wilson at New York City Center. 2019 saw the premiere of *Corybantic Games* at The Royal Ballet and a re-staged version of *Cinderella* for the English National Ballet at Royal Albert Hall. Most recently, *MJ The Musical* opened on Broadway winning four Tony Awards, including Best Choreography.

Among Mr. Wheeldon's other awards are a Tony Award for Best Choreography for *An American in Paris*, an Outer Critics Award for Best Choreography and Direction for *An American in Paris*, the Martin E. Segal Award from Lincoln Center, the American Choreography Award, the Dance Magazine Award, South Bank Show Award, multiple London Critics' Circle Awards, and the Léonide Massine Prize for new choreography. Mr. Wheeldon's productions of *Cinderella* and *The Winter's Tale* received the Benois de la Danse, and he is an Olivier Award winner for his ballets *Aeternum* for The Royal Ballet and *Polyphonia* for Morphoses.

In 2016, Mr. Wheeldon was named an O.B.E. and was made an Honorary Fellow of American Academy of Arts and Sciences. Christopher is a dual citizen of the United States and the United Kingdom and resides in New York City with his husband, Ross Rayburn, and their dogs, Hattie and Theo.

# BIOS



## BRIAN SELZNICK

### Story Adaptation

Brian Selznick is the author and illustrator of many books for children, including *The Invention of Hugo Cabret*, winner of the Caldecott medal and the basis for the Oscar-winning movie *Hugo*, directed by Martin Scorsese. His best-selling book *Wonderstruck* was recently made into a movie directed by Todd Haynes (with a screenplay by Selznick), starring Julianne Moore. His newest book, *Live Oak, With Moss* with poetry by Walt Whitman, is his first book for an adult audience. Other books include the *New York Times* best-seller *Baby Monkey, Private Eye*, written by his husband Dr. David Serlin, and illustrations for *Frindle* by Andrew Clements. Selznick is also a puppeteer, having performed in the original casts of Basil Twist's *Symphonie Fantastique* and *Petrushka*. He recently illustrated new covers to celebrate the 20th anniversary of the *Harry Potter* series by J.K. Rowling. He lives with his husband in San Diego, California and Brooklyn, New York. Find more information at [thebrianselznick.com](http://thebrianselznick.com).



## JULIAN CROUCH

### Set & Costume Designer

Originally from the UK, Julian Crouch is a Brooklyn-based theatre practitioner, artist, musician, known for his groundbreaking production of *Shockheaded Peter, Satyagraha* at the Met Opera, and the Tony nominated set of *Hedwig and The Angry Inch*. A co-founder and former artistic director of *Improbable*, a UK-based theatre company, his shows have been seen throughout the world. He is particularly known for his incorporation of large scale, live animation within his productions. He has worked extensively at the Met Opera and on Broadway in addition to a myriad of more unusual locations. He previously designed set and costumes for Christopher Wheeldon's *Cinderella* for the Dutch National Ballet and San Francisco Ballet.

Crouch directed and designed the Metropolitan Opera's 50th Anniversary Gala, designed *Hansel and Gretel* for La Scala, Milan, *King Arthur* for the Berlin Staatsoper, *Marnie* for the ENO and the Met Opera, *Barber Of Seville* for the Dutch National Opera, and *Ernani* for La Scala, Milan. Together with Saskia Lane, he internationally toured *Birdheart* — an intimate chamber piece of animated theatre, which played in Taiwan and in Brussels for the Dalai Lama. He has illustrated two books — *Jedermann* and *Maggot Moon*.

# BIOS



## NATASHA KATZ Lighting Designer

Natasha Katz has a long-standing creative relationship with Christopher Wheeldon and, prior to *The Nutcracker*, has collaborated with him on a number of ballets, including *Tryst* (2002), *Alice's Adventures in Wonderland* (2011) and *The Winter's Tale* (2014) all of which premiered at The Royal Ballet where he is Artistic Associate. Other collaborations with Wheeldon include *Continuum* (2002), *Carnival of the Animals* (2003), *Swan Lake* (2004), *Cinderella* (2012), *The Nutcracker* (2016), and the premiere of *An American in Paris* at the New York City Ballet (2005), Théâtre Châtelet (2014), and on Broadway (2015) for which she won a Tony Award.® Katz is a six-time Tony Award® winner whose Broadway credits include: *Frozen*, *Springsteen on Broadway*, *Hello, Dolly!*, *Long Day's Journey into Night*, *School of Rock*, *An American in Paris*, *Aladdin*, *Skylight*, *The Glass Menagerie*, *Once*, *Motown*, *Follies*, *The Coast of Utopia: Salvage*, *Aida*, and *Beauty and the Beast*. In London, she designed *The Glass Menagerie* (Olivier nomination 2017), *Motown*, *An American in Paris*, *School of Rock*, *Aladdin*, *Once*, *Skylight*, *Sister Act*, *Buried Child*, and *Cyrano*. Katz has also designed extensively for Off-Broadway and for American regional theatres. Her permanent installations include lighting for the audio-visual shows at Niketown London and New York City, *The Masquerade Village* at the Rio Casino, Las Vegas and *Big Bang* at the Hayden Planetarium in New York City.



## BASIL TWIST Puppetry & Effects Designer

Basil Twist is proud to return to The Joffrey Ballet. Previous collaborations with Christopher Wheeldon include *The Winter's Tale* and *Cinderella*. Work previously seen in Chicago includes Twist's Drama Desk Award-winning work in *Charlie and The Chocolate Factory* and *The Addams Family* and his original creations the multi award-winning *Symphonie Fantastique*, as well as *Petrushka* and *Master Peter's Puppet Show*, all at The Ravinia Festival. Twist's wide-ranging work is revitalizing puppetry as a serious and sophisticated stand-alone art form and establishing it as an integral element in contemporary theater, dance, and music. Other Credits: on Broadway; *The Pee Wee Herman Show*, *Charlie and The Chocolate Factory*. Original creations include; *La Bella Dormente Nel Bosco*, *Dogugaeshi*, *Hansel and Gretel*, *Behind The Lid*, *Arias with a Twist*, *Seafoam Sleepwalk*, *The Rite of Spring*, and *Sisters Follies*. Awards include; The Rome Prize, Obie, Drama Desk, New York Innovative Theatre, Henry Hewes, UNIMA, Bessies, Guggenheim, USA Artist, Doris Duke Performing Artist and a MacArthur Fellow. He lives in New York City, where he leads The Dream Music Puppetry Program.

# BIOS



## 59 PRODUCTIONS

### Video & Projection Design

59 Productions is a multi-award-winning design studio and production company based in London and New York. Their current work includes *Invisible Cities*. Opera designs include *Satyagraha*, *Marnie*, *Candide*, *The (R)evolution of Steve Jobs*, *Brigadoon*, *Pearl Fishers*, Metropolitan Opera 50th Anniversary Gala, *Two Boys*, and *The Enchanted Island*, *Sukanya*, *Morgen und Abend*, and *Eugene Onegin*, *The Shining*, *Satyagraha* and *Al gran sole carico d'amore*. Designs for theatre and events include *Apollo 50: Go For The Moon*, *West Side Story*, *Junk*, *An American in Paris*, *Oslo*, *The Last Ship*, *Reflections: Guggenheim Bilbao 20th Anniversary*, *A Perfect Harmony*, Paul Auster's *City of Glass*, *Wonder.land*, *David Bowie Is*, *Hedwig and the Angry Inch*, *Big Fish*, *Bloom*, *The Forbidden Zone*, *War Horse*, *Les Misérables* world tour and the London 2012 Olympics Opening Ceremony.



## JACQUELIN BARRETT

### Assistant to the Choreographer

Jacquelin Barrett trained at The Royal Ballet School, joined London Festival Ballet (now English National Ballet) and, over a period of eight years, danced soloist and principal roles in the company's repertory. Barrett was the Ballet Mistress for Central School of Ballet, Northern Ballet Theatre and English National Ballet. She is in demand as a guest teacher for many international professional companies and schools. From 1997 to 2008, Barrett taught at The Royal Ballet School, working mainly with the graduate female class. Since 2009, she has been assisting Christopher Wheeldon and staging his works around the world. She is the Associate Director on the musical *An American in Paris*.



## SUZANNE LOPEZ

### Children's Cast Rehearsal Director

Suzanne Lopez was asked to join The Joffrey Ballet in 1991 after a year with the Joffrey II Dancers. She retired in 2010 after a long and outstanding career with the Company. She danced principal roles in ballets by such choreographers as Robert Joffrey, Gerald Arpino, George Balanchine, Jerome Robbins, Alonzo King, John Cranko, José Limón, Antony Tudor, Twyla Tharp, Lar Lubovitch, and Sir Frederick Ashton. Some of her favorite roles to perform include the title roles in Cranko's *Romeo and Juliet* and Ashton's *Cinderella*, as well as the Sugarplum Fairy in Joffrey's *The Nutcracker*. She was also featured in world premieres by Edwaard Liang, Donald Byrd, Jessica Lang, and Margo Sappington, among others. Suzanne had a featured role in the movie *The Company*, directed by Robert Altman. She was thrilled to return to The Joffrey Ballet as a Rehearsal Director in 2016, where she has had the privilege to work on new creations with master choreographers, such as John Neumeier, Christopher Wheeldon, and Yuri Possokhov. Suzanne has also been a guest teacher, répétiteur and coach at various schools and companies across the world.

# BIOS



## ADAM BLYDE

### Children's Cast Rehearsal Director

Adam Blyde trained at The Royal Ballet School before joining Scottish Ballet in 2003, where he was promoted to Principal in 2008. He joined Rambert Dance Company in 2013. Throughout his career he danced in various works by George Balanchine, Kenneth MacMillan, William Forsythe, Frederick Ashton, Hans Van Manen, Krzysztof Pastor, Ashley Page, Annabelle Lopez Ochoa, and Stephen Petronio, among others. Blyde joined The Joffrey Ballet as Ballet Master in 2016.



## MICHAEL SMITH

### Children's Cast Rehearsal Director

Michael Smith joined The Joffrey Ballet in 2001 as a Company member after being one of the first participants in the Arpino Apprentice Program. Prior to joining the Joffrey, he was a student in the dance department at The Chicago Academy for the Arts, where he studied ballet with Anna Paskevskaya and Graham-based modern dance with Randy Duncan. Smith has also studied dance at The Ruth Page School and The Joffrey Ballet School's Midwest workshop.

During his time with the Joffrey, Smith has enjoyed performing in various ballets including *The Clowns*, *Les Patineurs*, *Les Presages*, *Miracle Interrupted*, *The Nutcracker*, *N.Y. Export: Opus Jazz!*, *Petrouchka*, *The Prodigal Son*, *Romeo and Juliet*, *Round of Angels*, *Le Sacre du Printemps*, *Square Dance*, *Suite Saint Saëns*, *The Taming of the Shrew*, *Tensile Involvement*, *Viva Vivaldi*, and *A Wedding Bouquet*.

Smith is currently a Program Coordinator with the Joffrey's Community Engagement Program, as well as an independent choreographer.

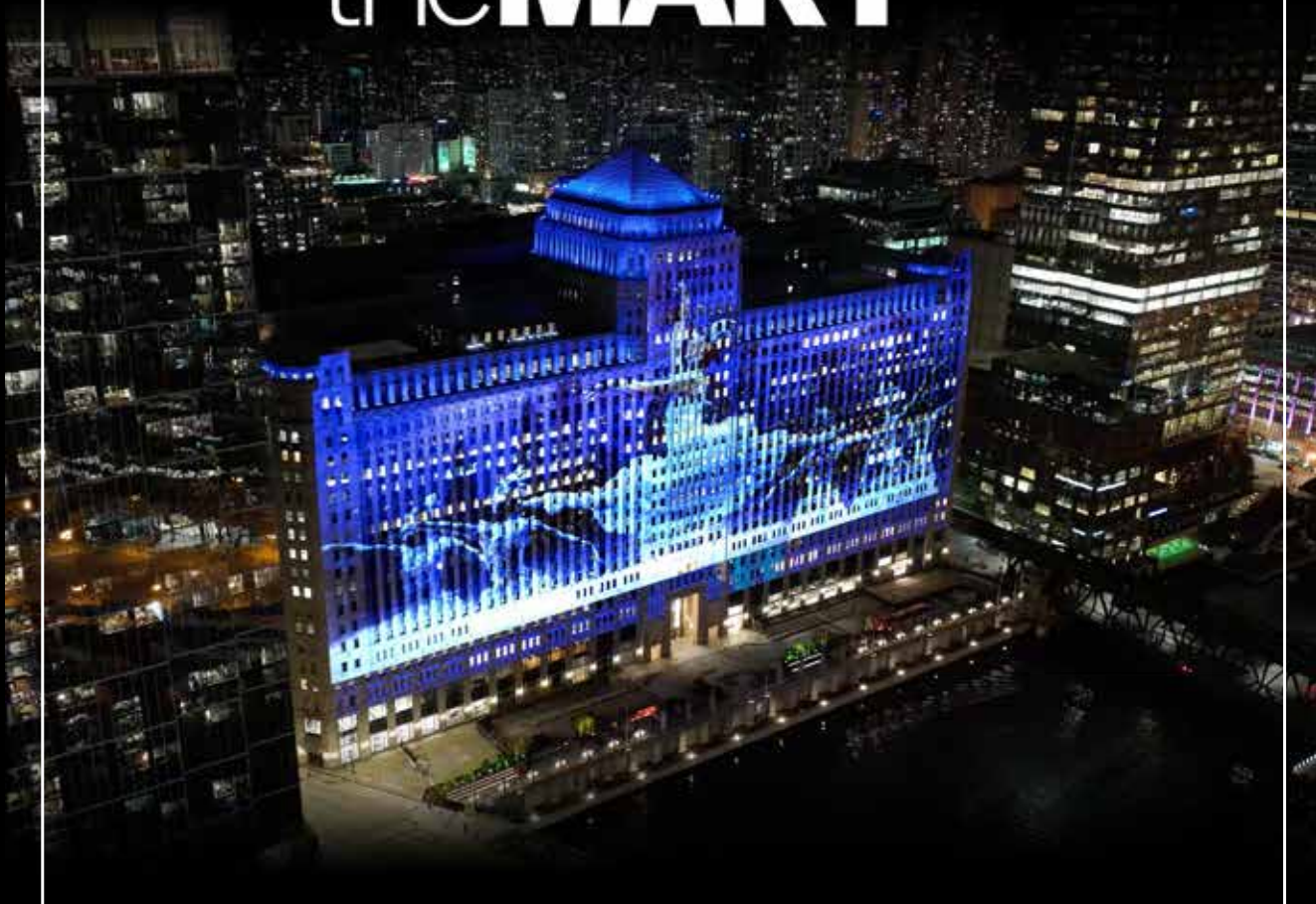


## CAITLIN MEIGHAN

### Children's Cast Rehearsal Director

Caitlin Meighan joined the Joffrey Ballet in 2006 and over her 10 seasons with the company performed soloist roles such as Four Little Swans in *Swan Lake*, Girl in Blue in *Interplay*, and Friends in *Don Quixote* while working with choreographers ranging from Yuri Possokhov to John Neumeier to Gerald Arpino. Following the Joffrey, Caitlin performed in the National Broadway Tour of Christopher Wheeldon's *An American in Paris* as a member of the ensemble and alternate to the lead. Over the years, Caitlin has also worked with Joffrey's Community Engagement as a choreographer and teacher for the Exelon Strobel Program and After School Matters. She partnered with proclaimed Stradivari Society violinist Phillippe Quint to create pieces for his music video *Valse Triste* and his performance of *Meditation* for the grand opening of the Mary B. Galvin Recital Hall at Northwestern University. Caitlin is the proud Mom of two boys and thanks her loving husband and family for their continued support. She is honored to be back with her Joffrey family.

# ARTon theMART™



## THE JOFFREY BALLET *The Nutcracker*

**NOVEMBER 19 - DECEMBER 30**

Nightly at 7:30 p.m.

Best enjoyed with accompanying audio along the Chicago Riverwalk  
between Wells and Franklin Streets.

theMART  
A VORNADO PROPERTY

artonthemart.com | @artonthemart

CHI | DCASE

## PREFERRED PARTNERS | 2022–2023

### OFFICIAL PROVIDER OF PHYSICAL THERAPY



Alyssa Hartley  
Jennifer Janowski  
Brianna Levy  
Kathleen Warner  
Kait Worth

### OFFICIAL HEALTH CLUB



### OFFICIAL PHYSICAL MEDICINE AND ORTHOPEDIC PROVIDER



Dr. Leda Ghannad  
Dr. Michael Hanak  
Dr. Simon Lee

### MARKETING AND PUBLIC RELATIONS

Allied Live  
Chirp Design, Inc.  
The Silverman Group

### LEGAL COUNSEL

Dentons  
Kathleen M. Gaber  
Masuda, Funai, Eifert & Mitchell, Ltd.  
Robert L. Mink  
Stephanie M. Monaco  
Mayer Brown, LLP  
Marilyn Pearson Attorney, LLC  
Sidley Austin LLP  
Skadden, Arps, Slate, Meagher & Flom LLP  
Winston & Strawn LLP

### LIGHTING

Theatrical Lighting Connection

### AUDIO

Argyle Dynamic

### ATMOSPHERE

NFC Company Inc.

### PHOTOGRAPHY

Cheryl Mann Photography  
Todd Rosenberg Photography

### VIDEOGRAPHY

Big Foot Media

### COSMETIC

Kryolan Professional Make-Up

### PROUD MEMBER



## BOARD OF DIRECTORS

### OFFICERS

Anne L. Kaplan

**Board Chair**

Lorna Ferguson

Daniel L. (DL) Morriss

**Vice Chairs**

Courtney Shea

**Treasurer**

Ronald J. Allen

**Secretary**

Ashley Wheeler MBE

**The Mary B. Galvin Artistic Director**

Greg Cameron

**President and CEO**

Shari Massey

**Assistant Treasurer**

### DIRECTORS

Patty Perkins Andringa

Mary Jo Basler

Luann Blowers

Marc DeMoss

Roger Deromedi

Pamella Roland DeVos

Adam DeWitt

Patti S. Eylar

Shelley MacArthur Farley

Brendan Fernandes

Jamie-Clare Flaherty

Chip Flannagan

Emily Follas

Juliana Ford

Ellie Forman

Patrick M. Gallagher Jr.

Jill Garling

Dana Hokin Garvey

Mark Giragosian

Sabrina Gracias

Linda Chaplik Harris

Sandi Hartstein

Jerrilyn M. Hoffmann

Richard S. Holson III

Lashana Jackson

Greg Jenkins

Jim Kirk

Farissa Knox

Guy Lakonishok

Donna M. LaPietra

Lynda Sue Lane, M.D.

Michael Larsen

Zachary D. Lazar Jr.

Barry Litwin

Richard McDonald

James McDonough

Coco Meers

Jess Merten

Susan G. Oleari

Diane Patience

Dana Rice

Jeffrey C. Rubenstein

Elva Rubio

Bruce Sagan

Eric C. Schieber, MD

Liz Sharp

Ildefonso Alvim de Abreu e Silva

Chuck Smith

Maureen Dwyer Smith

Rita Spitz

Lauren F. Streicher, MD

MarrGwen Townsend

Jason J. Tyler

Amanda Williamson

Joel V. Williamson

### LIFE DIRECTORS

Grace Barry

Fred Eychaner

Sonia Florian

Mrs. Robert W. Galvin

Patricia H. Gerbert†

Pamela B. Strobel

Ronald V. Waters III

Joseph H. Wender

### PAST CHAIRPERSONS

William M. Daley

Fred Eychaner

Gary E. Holdren

Dr. David A. Kipper†

Zachary D. Lazar Jr.

C. Steve McMillian

Bruce Sagan

Maureen Dwyer Smith

Pamela B. Strobel

Jason J. Tyler

Ronald V. Waters III

† Deceased

## WOMEN'S BOARD OF THE JOFFREY BALLET 2022–2023

Ellie Forman

**President**

Jessica Jecmen

**1st Vice President**

Chrissie Walker

Farissa Knox

**2nd Vice Presidents**

Merritt DeWitt

**Secretary**

Annie Atzef

**Treasurer**

Jenelle M. Chalmers

Johanna Ferguson

**Members-at-Large**

Elisabeth Adams

Julie O'Donnell Allen

Dr. Emily L. Arch

Anna Assenmacher

Melissa M. Babcock\*

Grace Barry\*

Mary Jo Basler

Nancy Gottlieb Bauer

Sally K. Bauer

Paula Borg

Mary Kay Mudd Bushonville

Rachel M. Cannon

Lynn Cohen

Kyoko Crawford

Sandra Deromedi

Ellen Distelheim

Dr. Jill S. Dodds

Alissa Eisemann

Beth Engel

Patti S. Eylar

Jennifer Rubin Fabian

Shelley MacArthur Farley

Jamie-Clare Flaherty

Ashley Floyd

Anne Forman

Dana Hokin Garvey

Darcy Goldfarb, MD

Shana Bear Guthman

Elisa D. Harris

Julie Harron

Stacie R. Hartman

Sandi Hartstein

Leigh Ann Herman

Dominika Malinowska

Hertsberg

Arica Hilton

Jerrilyn M. Hoffmann

Sherry Lea Holson

Qi Holtzman

Brooke Hubbuch

Amy Joffe

Anne L. Kaplan

Aleksandra Khasina

Kathleen Klaeser

Laura Kofoid

Mrs. Frederick A. Krehbiel\*

Kelly Rosen Lagrange

Melinda Lagrange

Dr. Lynda Lane

Wende Fox Lawson

Anne Lazar\*

Dania Leemputte

Kathryn Meneely Leister

Laurie Mahler

Joan Malliband

Elizabeth Marcus, MD

Heather Martin

Edyta Mazza

Monica McGurk

Helen Hall Melchior\*

Irene Michaels

Mrs. Julianne Migely

Linda Curtis O'Bannon, MD

Susan G. Oleari

Mary Ellen Pavone, MD

Molly Piech

Cindy Pinsky

Ibby Pinsky

Victoria Poindexter

D. Elizabeth Price

Christine Rahill\*

Hallie Blanchard Rehwaldt

Emily Rubenstein

Maggie Scheyer

Molly Schirf

Sarah Schrup

Liz Sharp

Courtney Shea

Veronica Siegel

Amelia Silva

Marilyn Slattery

Maureen Dwyer Smith\*

Maria Smithburg

Rita Spitz

Liz Stiffel

Stacy Straub

Nancy Sussman

Cheryl Tama Oblander

Lauren D.W. Tatar

Marina D.W. Tatar

Adrienne Traisman

Melissa Trandel

Jennifer Tscherney

Laura Larsen Venkus

Annabelle Volgman

Hilary Weinstein

Magnes Welsh

Susan L. Welsh

Diana Weiss Widman

Elizabeth Wippman

Laurie Wood

Leslie Zentner

Julie Zuckerman

**SUPPORTING AND  
NON-RESIDENT**

Dora Aalbregtse

Melissa Anton

Jetta Boschen

Sophie Bross

Marisa Bryce

Mary Kay Burke

Joan Colmar

Kelly Dettmann

Pamella Roland DeVos

Deborah Gordon Engle

Lydia Fisher

Sue-Gray Goller

Stephanie M. Grinage

Marjorie E. Habermann

Diana E. Harris

Martha Higgins

Courtney A. Hoffmann

Sharon King Hoge

Marci Holzer

Candace Collins Jordan

Elizabeth Ann Kasten

Donna M. LaPietra

Leslie Logsdon

Astrid A. McKinnon

Lori Mertz

Anne Simon Moffat

Shauna Montgomery

Brooks Morgan

Geeta Nagpal

Mrs. Jay L. Owen, Jr.

Mrs. John R. Pacholick

Mrs. James W. Pierpont

Camille Kearns Rudy

Kathleen Sarpy

Anne Shea

Carol J. Stone

Kathleen A. Swien

Yolanda Tyler

Noren Ungaretti

Victoria Verity

Carol A. Walter

Ann Waters

Pam Phillips Weston

Joyce M. Wippman

Marcie L. Wright

*\*Indicates Honorary Member  
(List current as of August 2022)*

## DONOR LISTING

The Joffrey Ballet would like to extend thanks to those who provide us with funding that ensures quality and engaging experiences for a variety of audiences. The following is a list of those who made contributions in the amount of \$1000 or more between October 28, 2021–October 28, 2022. Although space does not permit us to list all of our friends, we are grateful for the support from each and every one of our loyal donors.

### \$500,000+

Abbott Fund  
Margot and Josef Lakonishok  
The Searle Funds at  
The Chicago Community Trust

### \$100,000–\$499,999

Abbott Laboratories  
Alphawood Foundation Chicago  
The Allstate Insurance Company  
Mary Jo and Doug Basler  
Chicago Athletic Clubs  
Sandy and Roger Deromedi  
Daniel and Pamella DeVos Foundation  
Estate Of Christine Ellis  
Lorna Ferguson and Terry Clark  
The Florian Fund  
The Julius N. Frankel Foundation  
Cindy Galvin and Christopher Galvin  
Paul Galvin Memorial Foundation Trust  
The Grainger Foundation  
Sherry Lea and Richard Holson III with  
Guarantee Trust Life Insurance Company  
Anne L. Kaplan  
Nancy and Sanfred Koltun  
Lynda Sue Lane, MD  
Pritzker Foundation  
Sage Foundation  
Courtney C. Shea  
The Shubert Foundation  
Skadden, Arps, Slate, Meagher & Flom  
LLP  
Denise Littlefield Sobel  
Dr. and Mrs. Arnold Tatar  
Mr. and Mrs. Joel V. Williamson

### \$50,000–\$99,999

Julie O'Donnell Allen  
Athletico Physical Therapy  
Capital Group Private Client Services  
Sabrina Gracias  
The Walter E. Heller Foundation  
Illinois Arts Council Agency  
ITW  
Jewell Events Catering  
JHL Capital Group LLC  
Kiphart Family Foundation  
The John D. & Catherine T.  
MacArthur Foundation  
Susan and Nicholas Noyes in memory  
of Clara Rideout Noyes and her love  
of ballet  
Mr. and Mrs. John Patience  
Polk Bros Foundation  
Bruce Sagan and Bette Cerf Hill  
Rita Spitz and David Blears  
Pamela and Russ Strobel  
Estate of Elaine Soter  
Mr. and Mrs. Ronald V. Waters III  
Wilson Garling Foundation

### \$25,000–\$49,999

AARP Illinois  
BMO Harris Bank  
Liz Boshardy Memorial Fund  
The Brinson Foundation  
Paul Chasnoff and Joe Hopper  
Elizabeth F. Cheney Foundation  
Chicago Department of Cultural Affairs  
and Special Events  
The Crown Family  
Pamela Crutchfield  
Mr. and Mrs. Adam DeWitt  
Patti S. Eylar and Charles R. Gardner  
Lloyd A. Fry Foundation  
Michelle Goodman and  
Larry J. Goodman, MD  
GrubHub, Inc.  
Joan M. Hall  
Myrna W. Kaplan  
Julie and Guy Lakonishok  
Masuda, Funai, Eifert & Mitchell, Ltd.  
Coco B. Meers and Ethan Meers  
The Elizabeth Morse Charitable Trust  
Negaunee Foundation

Alexandra and John Nichols Household  
C.D. Peacock Fine Jewelers  
Prince Charitable Trusts  
Robert's Pizza and Dough Company  
Jeffrey C. Rubenstein  
Eric C. Schieber, MD  
Dr. Scholl Foundation  
Sidley Austin, LLP  
Bill and Orli Staley  
Jeanette Stevens  
Mr. and Mrs. Stuart Townsend  
Mr. and Mrs. Jason J. Tyler  
Mr. Miles D. White

### \$10,000–\$24,999

Anonymous (2)  
Mr. and Mrs. Ronald J. Allen  
Assured Guaranty  
Luann and David Blowers  
Mr. and Mrs. Dean L. Buntrock  
Greg Cameron and Greg Thompson  
Lawrence Corry  
Elliott Crigger  
Melissa de Abreu e Silva and  
Ildefonso Silva  
Deborah and Cody Engle  
Exelon  
Marilyn Fields and Larry Fields  
Tiffany Flannagan and Chip Flannagan  
Jennifer Gallagher and Patrick Gallagher  
Dana Hokin Garvey and Robert Garvey  
John R. Halligan Charitable Fund  
Sandi and Barry Hartstein  
George L. Jewell  
J.P. Morgan Private Bank  
Marilyn Katz and Scott Chambers  
Geraldyn Kendall and David Kendall  
Kovler Family Foundation  
Michael and Jennifer Larsen  
Mr. and Mrs. Zachary D. Lazar, Jr.  
Liz and Eric Lefkofsky  
Jay Byron Leibovitz in loving memory  
of Eric B. Eatherly  
Susan Lichtenstein and John Rokacz  
Richard & Martha Melman Foundation  
Barbara Mengarelli  
Mesirow Financial Holdings, Inc.  
Miriam Hoover Foundation  
National Endowment for the Arts

**\$10,000–\$24,999 (continued)**

Cindy Pan and Eric Easterberg  
D. Elizabeth Price and Lou Yecies  
Carol Prins and John Hart  
Stephen Reiss and Rena Hozore Reiss  
Jerome Robbins Foundation and Trust  
Elva Rubio, Rubiostudio  
Cari and Michael J. Sacks  
Judy A. Saslow Gallery  
The Service Club Of Chicago  
Mr. and Mrs. Jeffrey S. Sharp  
Rebecca Sherrick  
The Siragusa Family Foundation  
Jennifer Zobair and Chuck Smith  
Mr. and Mrs. Edward B. Smith, Jr.  
The Rudolf Nureyev Dance Foundation  
Tom and Joan Torri, Sarah Torri,  
and Paul Swinand  
The Trachtenberg Family  
Charitable Fund  
U.S. Bank Foundation  
William Blair  
Amanda Williamson and  
Matthew Johnson

**\$5,000–\$9,999**

Dara Altshuler  
Emily Strobel Amiet and Michael Amiet  
Annie Atzeff and Kristopher Atzeff  
Halie and Russell Braden  
Carlyle and Jean Cameron  
Mrs. Joyce Chelberg  
James Condon  
Mike DelBene  
Marc DeMoss  
Jacquelyn DeThorne  
Art and Lili Duquette  
Joseph & Bessie Feinberg Foundation  
Emily Follas and Timothy Jacob  
Nancy Follis  
Fortune Brands, Inc.  
Kathleen Giannuzzi and John Giannuzzi  
Nancy Gottlieb Bauer  
Karen Gray-Krehbiel and  
John Krehbiel, Jr.  
Dinah Gretsches and Fred Gretsches  
Harris Family Foundation  
Dr. and Mrs. Alan G. Harris  
Mr. and Mrs. David H. Hoffmann  
Kathleen Ihrig and Glenn Ihrig  
Greg Jenkins

Amy Joffe  
Robert Kohl and Clark Pellet  
Susan Koltun and Thomas Koltun  
Mazza Foundation  
Dr. Elaine Moor  
Estate of Peggy Morrow  
Barbara and Jonathan Moss  
Drs. Marsha and Robert Mrtek  
Susan G. Oleari  
Ian Paregol, in memory of Olivia Paregol  
Michael Payette  
Marie Plecha  
Carol Pollock  
John W. and Jeanne M. Rowe  
Joan Rubschlager and Paul Rubschlager  
Susan Ruder  
Mr. and Mrs. Eric Scheyer  
Sarah Schrup  
Mr. and Mrs. David Sensibar  
Margaret Siber  
The Sidley Austin Foundation  
Maria Smithburg and  
William D. Smithburg  
Mr. and Mrs. Neele E. Stearns, Jr.  
Dr. Edward S. Traisman and  
Mrs. Adrienne S. Traisman  
Richard and Noren Ungaretti  
Diane Watkinson and Troy Watkinson  
Julie Zuckerman and Daniel Zuckerman

**\$2,500–\$4,999**

Anonymous (3)  
Mr. and Mrs. William Adams IV  
Patty Perkins Andringa  
Mary Anthony and Lewis Flint  
Ms. Melissa Lane Anton and  
Mr. John J. Anton, Jr.  
Carey August and Brett August  
Susan Baird and Stephen Baird  
Sandra Bass  
Mr. and Mrs. Francis Beidler III  
Meta S. and Ronald Berger  
Family Foundation  
Jennifer Birmingham  
Ms. Carolyn A. Blessing  
Phoebe Boelter and Fred Boelter  
Ms. Evelyn Bosenberg  
John Brazzale  
Anthony Bruck  
Leslie Buchbinder  
Carolyn Bucksbaum

Marion Cameron-Gray  
Jenelle Chalmers and Stephen Chalmers  
Chirp Design, Inc.  
CNA Financial Corporation  
Charles DeShazer  
Amina Dickerson and Julian Roberts  
Nancy Dunkel and Bernard Dunkel  
Alissa Eisemann  
Jamie-Claire Flaherty  
Arthur Frank  
Greg and Christine Gallagher  
Christine Gay and Cyrille Blum  
Suzanne Gerhold  
Ethel and William Gofen  
Sue-Gray Goller  
Barbara Greis and Howard Gottlieb  
Shapiro Grynshztejn Family Fund  
of the Jewish Community Foundation  
Stacie R. Hartman  
Sarai Hoffman and Stephen Pratt  
Julie Holland  
Lauren Huefner  
Marsha Kamen  
Sherry Kaplan and Barry Kaplan  
Jeffrey Kerr  
Roberta Johnson Killeen and  
Timothy Killeen  
Klaff Family Foundation  
Laura Kofoid and David Ricci  
Erica Kuhlmann and Frank Kuhlmann  
Dr. Jennifer Kurth and  
Mr. Brian Van Klompenberg  
Sarah Ladgenski and Derek Ladgenski  
Robin and Jack Lavin  
William Lawless  
Dania Leemputte and Patrick Leemputte  
Kathryn Leister and Douglas Leister  
Ms. Linda Levey  
Mia Levy and Paul Levy  
John J. and Elisabeth K. Lewis  
Leslie Logsdon and Duncan Bourne  
Colleen Loughlin and John Sirek  
Joan Malliband and David Malliband  
Elizabeth Marcus, MD and Ira Belcove  
Leticia Marsico  
Edyta Mazza  
Sharon McGee  
Kevin McGirr  
Monica McGurk  
John R. Menninger  
Pamela G. Meyer

**\$2,500–\$4,999 (continued)**

Irene Michaels and Arny Granat  
Ms. Karen K. Migaldi and  
Mr. Scott F. Migaldi  
Robert and Lois Moeller  
Jazelle Morriss and Daniel L. (DL) Morriss  
Sylvia Neil and Daniel Fischel  
Neiman Marcus Michigan Avenue  
Ken Norgan  
Janis Notz and John Notz  
Thomas O’Keefe  
Sharon Oberlander and Lee Oberlander  
Robert Parris and Bradley Renner  
Molly Piech  
Cindy Pinsky  
Victoria Poindexter and  
Joseph P. Gaynor III  
Bonnie Price  
Constance Rajala  
Hallie Blanchard Rehwaldt and  
Thomas Rehwaldt  
Sonya Reich  
Hans Reiser and Alan Taylor  
Dana Rice  
Jennifer Rubin Fabian  
Judith and Michael Sawyer Household  
Lewis and Barbara Schneider  
Sara Schupf and Axel Schupf  
Dr. Sheldon and Mrs. Illeana Schwartz  
Craig Sirls  
Marilyn Slattery  
Beth Smetana and Gerard Smetana  
Patricia Smith  
Marjorie Staples  
Nicole Steel and Tyler Steel  
Nancy and Ira Sussman  
Peggy Swartchild and James Swartchild  
Cheryl Tama Oblander and  
Scott Oblander  
Nathan Tannenbaum Foundation Inc.  
Dana Shepard Treister and  
Dr. Michael Roy Treister  
Robert and Etti Van Etten  
David Varnerin  
Susan C. Vonderheid  
Debbie Wang and David Hoyt  
Leslie J. Warner and Stephen B. Warner  
Susan L. Welsh  
Diana and Stuart Widman  
Amy Williams and Chad Williams  
Women’s Board of The Joffrey Ballet

Russ Zajtchuk and Joan Zajtchuk  
Ms. Helen L. Dunbeck and  
Dr. John Zimmermann

**\$1,500–\$2,499**

Kathleen and Jeff Abbott  
Evelyn Alter  
Dr. Emily and Mr. Justin Arch  
Mr. and Mrs. Brian W. Babcock, Sr.  
Christine Bakalar and John Bakalar  
Virginia Bobins  
Paula Borg  
Anne Brody and Michael Brody  
Katharine Burns and Nicholas Burjek  
Rowland Chang  
Dr. John Dainauskas  
Eleanor DeMoss and Jon DeMoss  
Roberta Dillon  
Margaret Dolan  
Marilyn Eager and Allen Eager  
Lois Eisen and Stephen Eisen  
Johanna Ferguson  
Mimi Frankel and Bud Frankel  
Jenny Freidheim and Ed Freidheim  
Mr. Mark Giragosian and  
Mrs. Alexis Polito Giragosian  
Bruce A. Gober, M.D.  
Darcy Goldfarb, MD  
Susan Goldschmidt and Miles Taub  
Deborah Graham  
Group Theater Tix  
Elisa Harris and Ivo Daalder  
Sandy Ihm and Kenneth Belcher  
Melinda Lagrange and Lucien Lagrange  
Nancy Karger and Frank Karger  
Drs. Kristi Kirschner and Raymond Curry  
Dennis and Kathleen Klaeser  
Ms. Donna M. LaPietra and  
Mr. William Kurtis  
Wende and Jim Lawson  
Kerry Lisanti  
Lisa Klimley Malkin and Cary J. Malkin  
Shari Massey and Bill Massey  
Adrienne Meisel and Rand Sparling  
Linda Curtis O’Bannon, MD  
Mary Jane O’Connor  
Lee and Sharon Oberlander  
Marjory Oliker  
Rheva Phillips  
Barbara Atkins Ruhman  
Sahara Enterprises, Inc.

Carol Ann Saikhon  
Patricia Schmalzl and William Schmalzl  
Terry Schwartz  
Jim Sears  
Yvonne Shu and Tony Shu  
Marcey Siegel and Kenneth Siegel  
Veronica Siegel  
Dawn Stanislaw  
Tammy and Eric Steele  
Patricia Sternberg  
Annie Wallis and Tom Whitehead  
Audrey Weaver  
Mr. and Mrs. Robert K. Zentner

**\$1,000–\$1,499**

Anonymous (5)  
Mr. and Mrs. James M. Amend  
Amsted Industries  
Big Foot Media  
Heiji Choy Black and Brian Black  
Judy Block and Philip Block  
Shaun Block and Andrew Block  
D. Jeffrey and Joan H. Blumenthal  
Jeanne Brett  
Natalie Brown  
The Carmi Family Charitable Fund  
Kathleen Carpenter and John Gould  
Lynn Cohen and Edward Cohen  
Mrs. John C. Colman  
Mrs. Erin C. Court and Mr. Stephen Court  
Barbara Davis and Michael Davis  
Emily Doskow  
Shelley Farley and William Farley  
Geoffrey Flick  
Ellie Forman and Jeremy Forman  
Janet Fox and David Fox  
Eileen Geary  
Patricia Gillian and Michael Gillian  
Beverly Grossman  
Amy Harwood and Evan Harwood  
Lisa Huston  
Mary Ittelson  
William Jentes  
Dr. Maryl R. Johnson  
Masahiro Kasai and William Myers  
Karen Kawashima and Neil Kawashima  
Gloria Kearney and Dan Kearney  
Aleksandra Khasina  
Ms. Sue Klein and Mr. William Klein  
Jeff Kramer  
Lucy Lehman and Ken Lehman  
Jacqueline Lentz  
Michael Leppen  
James Liechty  
Jessie and Douglas MacDonald  
Scott McCausland  
Jess and Amanda Merten  
Gary Metzner and Scott Johnson  
Lucy Minor  
Julie Moller and Scott Moller  
Patricia Mooney  
Steven Morris  
Jamin and Phoebe Nixon  
Franklin Nussbaum  
Janet Oppenheimer  
Mr. Jonathan F. Orser  
Catherine Perez and William Perez  
Madeleine and Harvey Plonsker  
Richard Price  
Barbara Reed  
Christine Roloff  
Stephanie and Bill Sick  
Larry Simpson  
Janet Carl Smith and Mel Smith  
Bradley Sterrenberg  
Liz Stiffel  
Nancy Timmers and Michael Timmers  
Dana Treister and Michael Treister  
Rebecca Vlasic  
Annabelle Volgman and Keith Volgman  
Albert Walavich  
Elizabeth Wippman and Tom Wippman  
Alice and Herb Zarov

**TRIBUTE GIFTS**

The following tribute gifts were made between October 28, 2021 and October 28, 2022.

**In Honor Of:**

Susan Adleman  
Mary Jo Basler  
Greg Cameron  
April Daly  
Merritt DeWitt  
Ellen Distelheim  
Julia Doherty  
Erica Edwards  
Fred Eychaner  
Patti Eylar and Charlie Gardner  
Bill and Shelley Farley  
The Fiala Family  
Donna Fleming  
Ellouise Ford  
Ellie Forman  
Fred and Dan's Wedding  
Sarah Geocarlis  
Sue-Gray Goller  
Shana Guthman  
Virginia Hargarten  
Sandi and Barry Hartstein  
Amanda Heuermann

Anne Kaplan  
Cindy A. Kronman  
Sophia Longid  
Anne Moffat  
Hallie Rehwaldt  
The Retiring Company Artists  
Margaret Reynolds  
Jeffrey Rubenstein  
Liz Sharp  
Courtney Shea  
Amelia Silva  
Chuck and Jennifer Smith  
Pam Strobel  
Linda Swayze  
Penny Traisman  
Ava Umhoefer  
Magnes Welsh  
Susan Welsh  
Ashley Wheeler and Brian Johnson  
Phyllis Wills  
Laurie Wood  
Louie, Arthur and Ira Yelderman

**In Memory Of:**

Gerald Arpino  
William Carter  
Eric Eatherly  
Judith Griffin  
Hazel Hixon  
Judi Jecmen  
Bobby Levinson  
Robert Nicholson  
Dianne M. Nishimura  
Olivia Paregol  
Jackie Poe  
Zaida Rodriguez  
Candy Schumacher  
Gerard C. Smetana  
Kathy Kalesperis Smith  
Beatrice Spier  
Ronn Stewart  
Irene A. Stoesser  
Robert Strichartz  
Susan Van Peurse  
Karin Elizabeth Wagner  
Carey Rose Winski and Ann Barzel

This group consists of dedicated supporters who have designated a special gift, through their will, trust, IRA, or other planned giving arrangements to benefit Joffrey into the future.

### THE JOFFREY BALLET STAR SOCIETY

Anonymous (12)  
Michael Spencer Albert  
Mr. and Mrs. Ronald J. Allen  
Patty Perkins Andringa  
Melissa M. Babcock  
Pamela Jo Block  
Joan and Jeff Blumenthal  
Greg Cameron and Greg Thompson  
Jacqueline Caputo  
Charles Capwell and Isabel Wong  
Nisha Carpenter and Naomi Carpenter  
Anne Chapman and Joshua Green  
Paul Chasnoff and Joe Hopper  
The Cox Trust  
Helen Elkiss  
Deborah Engle  
Patti S. Eylar and Charles R. Gardner  
Lorna Ferguson and Terry Clark  
Christine B. Fisher  
Bruce Gober MD and Donald Ratner  
Michael Goldberger  
Sue-Gray Goller  
Larry and Michelle Goodman  
Sandi and Barry Hartstein  
Dale and Becky Heiking  
Barbara Henigbaum Papp  
Marci and Ronald Holzer  
Jessica Jagielnik  
Darlene J. Johnson  
Marsha Kamen  
Anne L. Kaplan  
Myrna W. Kaplan  
Arthur Stewart Kerr and  
    Marcia Davis Kerr  
Paul A. Kobasa  
Tracey F. Konicek  
John C. and Carol Anderson Kunze  
Dr. Lynda Lane  
Henrietta Leary  
Linda Levey  
Marsha Lieberman  
Philip Lumpkin  
Sean and Heather Martin  
John McAllister  
Kevin C. McGirr  
Rosemary Milew and Daniel Pilch  
Anne Simon Moffat and  
    Prof. John Keith Moffat  
Dr. Elaine Moor  
Julie Willis Moore, in memory  
    of Victoria Shiflet Cress  
Cheryl Tama Oblander and  
    Scott Oblander  
Jonathan F. Orser  
Darrell, Carmen, Alexander,  
    Gabrielle Ortiz  
Susan Peet  
D. Elizabeth Price  
Alyssa Quinlan  
Christine and Daniel Rahill  
Camille Kearns Rudy  
Eric C. Schieber MD  
Douglas M. Schmidt  
Terry A. Schwartz  
Courtney C. Shea  
Thomas G. Sinkovic  
Craig Sirls  
Marilyn Slattery  
Brian Smith  
Constance Steinhaus  
Jeanette Stevens  
Michael Nicholas Sutko  
Marlene A. Van Skike  
Stephen and Leslie Warner  
Ron and Ann Waters  
Magnes Welsh  
Susan L. Welsh  
Diana and Stuart Widman  
Amanda Williamson and  
    Matthew Johnson  
Shannon Stone-Winding and  
    Derrick Winding  
Andrea and Rich Winship  
Laurie Wood  
Mrs. Anna Mary Zarrelli

## THE JOFFREY BALLET STAR SOCIETY

To learn more about joining  
**The Star Society**

and leaving a lasting legacy at Joffrey,  
please contact Kristen Bigham,  
Director of Major & Planned Gifts  
**[kbigam@joffrey.org](mailto:kbigam@joffrey.org) | 312.386.8962**

# The Joffrey is grateful to The Nutcracker Sponsors:

## THE NUTCRACKER PRESENTING SPONSOR



## THE NUTCRACKER PRODUCTION SPONSORS



## THE NUTCRACKER COMMISSIONING SPONSORS

Margot and Josef Lakonishok

Searle Funds at The Chicago Community Trust

Hancher Auditorium, University of Iowa



Insurance | Risk Management | Consulting



Mary Jo and Doug Basler

Rosemarie and Dean Buntrock

Sandy and Roger Deromedi

Pamella Roland DeVos and Daniel DeVos

Sonia Florian

The Walter E. Heller Foundation

Auditorium Theatre of Roosevelt University

Bruce Sagan and Bette Cerf Hill

Bill and Orli Staley Foundation

Women's Board of The Joffrey Ballet

And the many "Believers" whose generosity helped bring this magical story to life.

Photo by Cheryl Mann.

MAKE YOUR NUTCRACKER EXPERIENCE  
**EVEN SWEETER**  
**THIS HOLIDAY SEASON**  
with hot chocolate from Stan's Donuts!



**DECEMBER 3-27**

Stop in to your favorite Stan's location for  
**A COMPLIMENTARY SMALL HOT CHOCOLATE**  
to warm up with after the show.

\* Proof of ticket required. Excludes Mariano's locations. Must make an in-store purchase to receive hot chocolate.

## JOFFREY STAFF LISTING

### EXECUTIVE LEADERSHIP

ASHLEY WHEATER MBE

**The Mary B. Galvin Artistic Director**

GREG CAMERON

**President & Chief Executive Officer**

### ACADEMY

Raymond Rodriguez

**Abbott Academy Director**

Keesha Beckford

**Youth Division Liaison**

Oğulcan Borova

**Head of Studio Company and**

**Ballet Trainee Program**

Katlin Bourgeois

**Head of Contemporary Ballet**

**Trainee Program**

Brianna Brandon

**Academy Assistant Director**

Raul Casasola

**Academy Principal Teacher**

Zachary Crewse

**Academy Production Coordinator**

Allie Deaver-Petchenik

**Registrar and Student Life Coordinator**

Karin Ellis-Wentz

**Head of Conservatory and**

**Pre-Professional Program**

Maria Gonzalez

**Academy Administrative Assistant**

Molly Hillson

**Academy Associate**

Nia Khan

**Academy Communications &**

**Logistics Coordinator**

Suzie Calarco

Gabrielle Confer

Carly Liegel

**Receptionists**

### ADVANCEMENT

Brian Smith

**Chief Advancement Officer**

Kristen Bigham

**Director of Major & Planned Gifts**

Esme Burrows

**Partnership Activation & Events Manager**

Colene Byrd

**Director of Sales & Patron Services**

Jade Capua

**Marketing Coordinator**

Eleanor Carter

**Grant Writer**

Chelsea Dvorchak

**Advancement Operations & Data Specialist**

Julia Doherty

**Artistic Innovation Fund Project Manager**

Sarah Fiala

**Marketing Director**

Sarah Geocariz

**Associate Director of Annual Giving**

Pablo Hernandez-Tovar

**Patron Services Associate**

Austin Jennings

**Patron Services Supervisor**

Carolyn McCabe

**Digital Strategy Manager**

Edward McCreary

**Associate Director of Grants & Partnerships**

Alicia Petrone

**Major Gifts Manager**

Bradley Renner

**Director of Development**

Aja Singletary

**Patron Services Associate**

Sierra Taylor

**Patron Services Associate**

### ARTISTIC AND MUSIC

Nicolas Blanc

**Rehearsal Director**

Adam Blyde

**Rehearsal Director**

Suzanne Lopez

**Rehearsal Director**

Scott Speck

**Music Director & Conductor**

Michael Moricz

**Assistant Conductor & Company Pianist**

Jorge Ivars

**Company Pianist**

### ARTISTIC AND PRODUCTION

Cody Chen

**General Manager**

Jeremy Gubman

**Artistic Administrator and**

**Assistant to the Artistic Director**

Catherine Eby

**Company Manager**

Shandee Vaughan

**Production Manager**

Chris Maravich

**Lighting & Video Supervisor**

Scott Wolfson

**Technical Supervisor**

Katherine Selig

**Principal Stage Manager**

Amanda Heuermann

**Stage Manager**

Ellie Cotey

**Costume Manager**

Gregg Benkovich

**Shoe Manager**

Jerica Hucke

**Draper**

Babara Luchsinger

**Lead Stitcher**

Alyssa Pietrzyk

**Stitcher**

Brittany Crinson

**Head of Wig and Makeup**

Adam Todd

**Master Carpenter**

Ian Scarlato

**Property Master**

Matthew Carney

**Master Electrician**

Jeremy Hoen

**Sound Person**

John Wilson

**Assistant Electrician/Programmer**

Joshua Townsend

**Flyperson**

David Klein

**Shop Carpenter**

### COMMUNITY ENGAGEMENT

Linda Swayze

**Director of Community Engagement**

Kelcey Broomfield

**Community Engagement Associate**

Julianna Jarik

**Community Engagement Manager**

Ari Meixner

**Community Engagement Business**

**Administrator/Receptionist**

Pablo Sanchez

**Community Engagement**

**Program Coordinator**

Michael Smith

**Community Engagement Program**

**Coordinator**

### FINANCE AND OPERATIONS

Shari Massey

**Deputy Director & Chief Financial Officer**

Erin Brown

**Human Resources Coordinator**

Katie Dysard

**Staff Accountant**

Paul Key

**Director of Technology**

John Kurtz

**Director of Facility Operations**

Gee Lim

**Director of Finance**

Lauren Martin

**Assistant to the President & CEO**

Marisa Paulsen

**Payroll and Accounts Payable Coordinator**

Jeremy Theel

**Database & Systems Analyst**

Sarah Venuti Yates

**Director of Human Resources**

# Lyric

## MEMBERS OF THE LYRIC OPERA ORCHESTRA

### THE NUTCRACKER

SCOTT  
SPECK  
Conductor

MICHAEL  
MORICZ  
Assistant  
Conductor

### VIOLIN I

Robert Hanford  
Concertmaster

Heather Wittels  
Assistant Concertmaster

Bing Jing Yu  
Eleanor Bartsch  
Alexander Belavsky  
Kathleen Brauer  
Jennifer Cappelli  
Rika Seko

### VIOLIN II

David Volfe  
Principal Second Violin

Irene Radetzky  
Assistant Principal

Jennifer Cappelli  
Injoo Choi  
Carmen Kassinger

### VIOLA

Carol Cook  
Principal

Terri Van Valkinburgh  
Assistant Principal

Patrick Brennan  
Melissa Trier Kirk

### CELLO

Walter Preucil  
Principal

Mara McClain  
Assistant Principal

Paula Kosower

### BASS

Samuel Shuhan  
Principal

Andrew L. W. Anderson  
Assistant Principal

### FLUTE

Marie Tachouet  
Principal

Jennifer Clippert  
Dionne Jackson  
Janice MacDonald

### PICCOLO

Dionne Jackson

### OBOE

Paul Lueders  
Principal

Adèle-Marie Buis

### CLARINET

Trevor O’Riordan  
Principal

Wagner Campos

### BASS CLARINET

Wagner Campos

### BASSOON

Preman Tilson  
Principal

Hanna Sterba

### HORN

Robert E. Johnson  
Principal

Neil Kimel

### TRUMPET

William Denton  
Principal

David Inmon  
Rebecca Oliverio

### TROMBONE

Jeremy Moeller  
Principal

Mark Fisher

### TUBA

Matthew Gaunt  
Principal

### TIMPANI

Edward Harrison  
Principal

### PERCUSSION

Douglas Waddell  
Principal

Eric Millstein

### HARP

Lynn Williams  
Principal

### ON STAGE TRIO

Renée-Paule Gauthier, violin  
Sergey Gutorov, clarinet  
Ronnie Kuller, accordion

John Rosenkrans  
Librarian

Christine Janicki  
Orchestra Personnel  
Manager



**JOFFREY ★ BALLE**  
CHICAGO

JOFFREY TOWER | 10 EAST RANDOLPH STREET | CHICAGO, IL 60601 | JOFFREY.ORG

Joffrey Company Artists Yumi Kanazawa and José Pablo Castro Cuevas. Photo by Todd Rosenberg.